

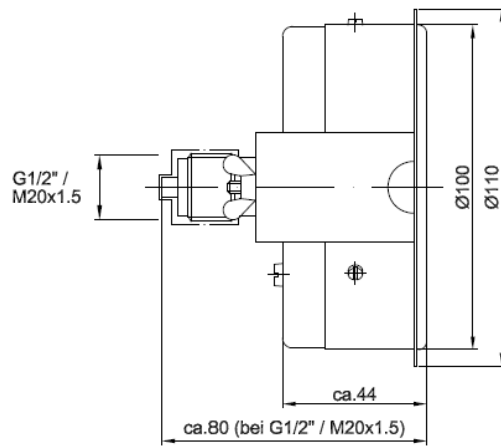
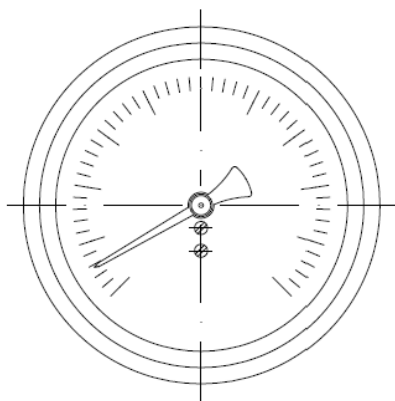
Pressure Gauge - M0014

- as per DIN EN 837-1
- nominal size: 100
- with frontal rim and mounting bracket
- mechanical, antimagnetic
- sea water resistant, maintenance free
- shock and vibration resistant as per BV043/044
- motion work with dampened axis
- with bursting diaphragm

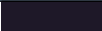

















Applications shipbuilding, naval shipbuilding, heating and air-conditioning technology, environmental and process technology, plant construction.

Media All types of fluids and gases that do not corrode copper alloys, solidify or have a high viscosity. (i.e. nitrogen, hydraulic oil)

| Specifications | | |
|---|--|---------------|
| connection | M16x1,5 M20x1,5 G1/2A *other options on request | |
| connection position | backside, centric | |
| bourdon tube | c-shape < 80 bar < helix shape | |
| mounting position | 90° *other options on request | |
| precision class | 1 as per DIN EN 837-1 *other options on request | |
| permanent pressure | 100% of scale | |
| alternation pressure | 90% of scale | |
| short time overpressure | 130% of scale | |
| Technical Limitations | | |
| | min | max |
| nominal pressure | -1 bar | 400 bar |
| operating temperature | -20°C | 100°C |
| temperature influence | | ±0,4% FSO/10K |
| weight | 0,75 kg | |
| Material | | |
| casing | brass | |
| wetted parts | copper alloys stainless steel | |
| window | security glass, etched on one side | |
| Additional Options | | |
| coloured sections on scale | red/yellow/green | |
| free from oil and grease | yes/no | |
| suitable for O ₂ application | yes/no | |
| suitable for fuel cells | yes/no | |
| with throttle screw | yes/no | |



Dimensions

| Colours | | | |
|---------------------------------|-------------|--------------|---|
| casing | black | RAL 9005 |  |
| | grey | RAL 7037 |  |
| frontal rim | black | RAL 9005 |  |
| | grey | RAL 7037 |  |
| mounting bracket | unvarnished | |  |
| scale background | white | RAL 9010 |  |
| | black | RAL 9005 |  |
| | fluorescent | UVG 75 green |  |
| scale labels | yellow | RAL 1021 |  |
| | white | RAL 9010 |  |
| | fluorescent | UVG 75 green |  |
| | black | RAL 9005 |  |
| pointer | black | RAL 9005 |  |
| | yellow | RAL 1021 |  |
| | fluorescent | UVG 75 green |  |
| scale coloured sections | red | RAL 2002 |  |
| | yellow | RAL 1021 |  |
| | green | RAL 6018 |  |
| *more colour options on request | | | |