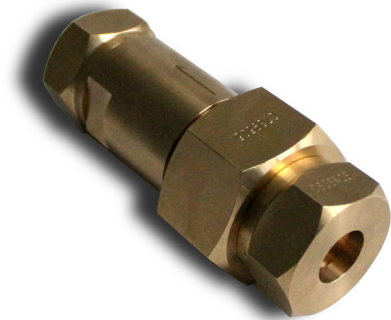


Throttle for Depth Gauge - M0028



The throttle protects the depth gauges from damage due to sudden pressure spikes.

- mechanical, antimagnetic, sea water resistant, maintenance free
- shock and vibration resistant as per BV 043/044

areas of use ship building, naval ship building
measuring media sea water

Specifications		
connections	G7/8 G1A M24x1,5 G5/8 * other options on request * pressure inlet and outlet can have different connections	
nominal size	DN8 DN16	
nominal pressure	PN40 PN50	
Technical Limitations		
	min	max
operation temperature	0°C	+100°C
storage temperature	-40°C	+125°C
weight	1,5 kg	
Material		
casing	bronze (2.0967 / 2.1052)	
seal	copper	
spring	stainless steel	

