

Double-Pressure Gauge on Board - M0050

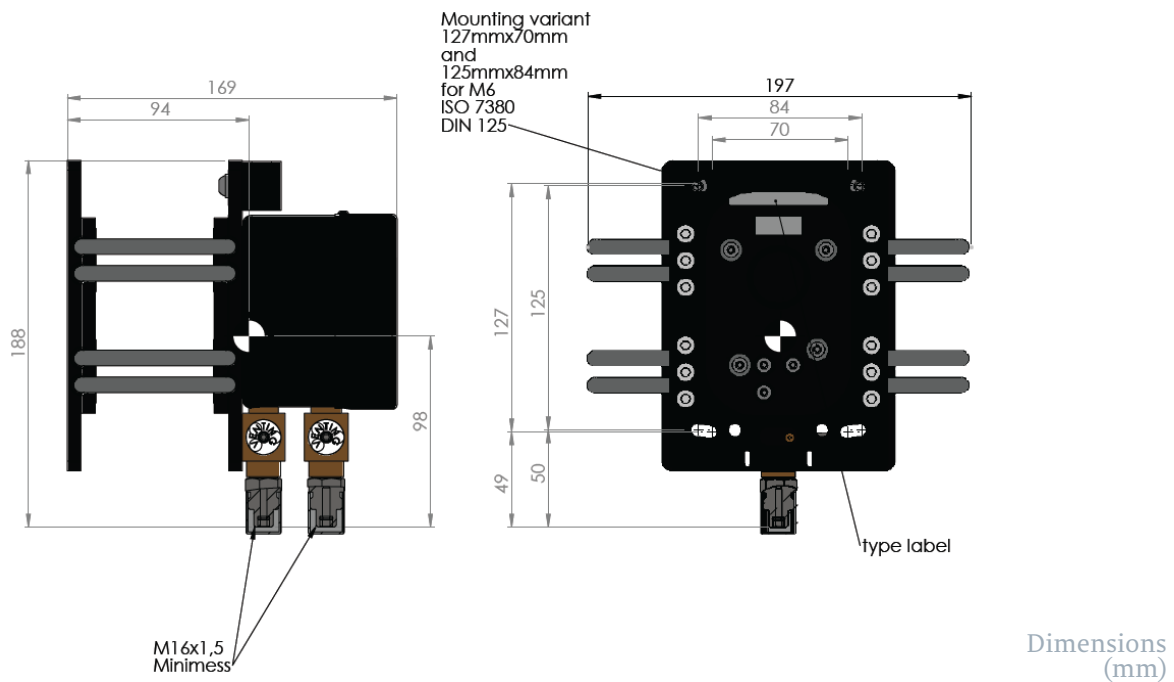


- as per EN 837-1
- nominal size 100, on board
- mechanical, maintenance-free
- antimagnetic, sea water resistant
- shock and vibration resistant as per BV 043/044
- with bursting diaphragm
- Variants with double pointer or differential dial

Applications shipbuilding, naval shipbuilding, heating and air-conditioning technology, environmental and process technology, plant construction.

Media All types of fluids and gases that do not corrode copper alloys, solidify or have a high viscosity. (i.e. nitrogen, hydraulic oil)

Available Versions			
connection	M16x1,5 *other options on request		
connection position	bottom		
bourdon tube	c-shape < 80 bar < helix shape		
accuracy class	1 as per EN 837-1		
permanent pressure	100% of scale		
alternating pressure	90% of scale		
short term overpressure	130% of scale		
Technical Limitations			
	min		max
pressure range	-1 bar		400 bar
temperature of medium	-20°C		+100°C
operation temperature	-20°C		+100°C
temperature influence			±0,4% FSO / 10K
weight	2,2 kg		
Options			
red markings on scale	yes/no		
coloured sections on scale	red/yellow/green		
free from oil and grease	yes/no		
fit for O application	yes/no		
fir for fuel cells	yes/no		
Material			
casing	brass		
wetted parts	bronze, beryllium copper		
window	safety glass, non-reflecting		



Colours			
casing	black	RAL 9005	
	grey	RAL 7037	
background of scale	white	RAL 9010	
	black	RAL 9005	
scale labels	fluorescent colour	UVC 75 green	
	yellow	RAL 1021	
pointer	fluorescent colour	UVC 75 green	
	black	RAL 9005	
	black	RAL 9005	
coloured markings on scale	red	RAL 2002	
	yellow	RAL 1021	
	fluorescent colour	UVC 75 green	
	red	RAL 2002	
	yellow	RAL 1021	
	green	RAL 6018	
	*other colours on request		